



The extended length and heavy-duty design model was designed for vehicle alignments and general services work and accommodate a wide variety of wheelbases and full-size trucks.

The heavy-duty scissors lifts use four cylinders to support and each both cylinders are designed working synchronously.

FEATURES

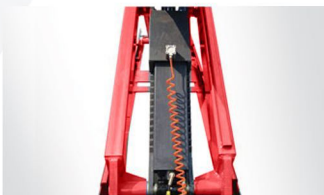
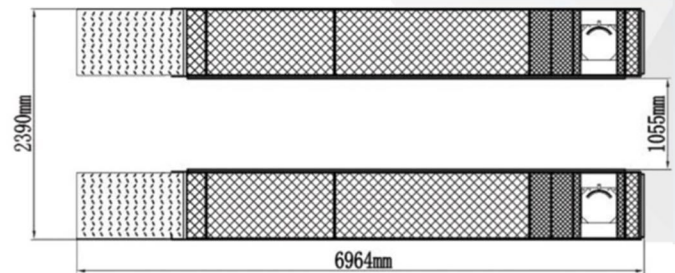
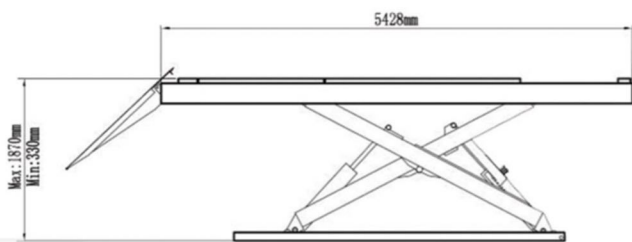
- 2-dual synchronous cylinders are applied to assure the lifting level on both platforms.
- Electro-air control system, safety self-lock mechanism.
- Skid proof diamond runway.
- Integrated rear slip-plates.
- Heavy duty design, the X serial scissors lifts use large steel tube to make it strong and assure the runways remain level during working.
- Optional Jack and Turnplate.



Designed and Engineered
IN THE USA

SPECIFICATIONS

Model	Lifting Capacity	Lifting Time	A		B	C	D	E	Gross Weight	Motor
			Lifting Height	Minimum Height	Runway Length	Overall Width	Runway Width	Overall Length (Inc. Ramps)		
RLX-16KA	7.3 t (16,000 lbs)	110 Seconds	1870mm (73 5/8")	330mm (13")	5428mm (213 3/4")	2390mm (94 1/8")	625mm (24 5/8")	6964mm (274 1/8")	2.88 t (6,349 lbs)	4.0HP



Electro-air Safety Device



Shelf For Service



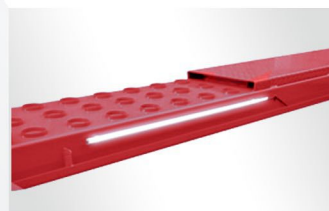
Turnplate Position



New rear-slip ball sets



Extension Platform Kits



New LED lights, can be directly absorbed on the lifting platform for a convenient work process.



Optional
Turnplates part no. 40101



Optional
LED Lights, 4 pieces tube and one control switch. Powerful magnetics can adsorption on the lift.



Optional
Air Line Kits (Kits No 40102)
All our lifts are designed to use the air line kits for the rolling Jack



Optional
Rolling Jack
J6H: Manual Hydraulic type 2.8 t
J6A: Pneumoatic Hydraulic type 2.8 t
RJ-8A: Pneumoatic Hydraulic type 3.6 t